



# **OXNARD KNIGHTS VISITOR INFORMATION**

**Address: 1400 Raiders Way Oxnard, CA 93033**

## WELCOME

Welcome to the beautiful city of Oxnard! The 805 has much to offer during your visit. We want to ensure you get the most out of your trip, providing you with as much information to make your visit as comfortable as possible. Oxnard is cool in temperature, culturally authentic, and vibrant beyond measure. Our city is home to miles of beaches that you can enjoy during your stay, and just sixty miles northwest of LAX and in close proximity to Santa Barbara and other major destinations. Oxnard is also home to the Dallas Cowboys Training Camp during July and August. Oxnard is truly one of California's best kept secrets.

## SPORTSMANSHIP

We not only hold our players, coaches, parents and volunteers to a high standard of sportsmanship, but also the fans. As the players on the field have a responsibility to play with the highest level of sportsmanship, we expect the fans to do the same. Fan support is best when it is positive. Any person that exhibits unsportsmanlike behavior will be removed from the event and face suspension as per our Code-of-Conduct policy. Have a great time, be safe and best of luck!

## HOSPITAL

The closest hospital is  
St. John's Regional Medical Center  
1600 N. Rose Ave.  
Oxnard, CA. 93030  
Website: [www.dignityhealth.org](http://www.dignityhealth.org)  
(805) 988-2500

## PARKING

Gates open at 7:00a.m. Feel free to park on the school premises in a designated parking lot that is shown on the map (attached). You can enter on Raider Way. If you park on a public street, please obey the posted signs to avoid a parking ticket.

## CANOPIES

If you are planning on using a canopy or tent, we would appreciate if you set up at the TOP OF THE STANDS so you do not block the sight of other spectators.

## SEATING

**OXNARD KNIGHTS FANS will use the North stands** and the **VISITING FANS will use the South stands**. Please make sure that no one roams around on the school campus or enters any restricted buildings.

## FIELD ACCESS

**NO UNAUTHORIZED PERSONS WILL BE ALLOWED ON THE GAME FIELD. ALL COACHES MUST HAVE THEIR BADGE.**

## RESTROOMS

Public restrooms are located on East side of the stadium. Please keep them as clean as possible.

## SNACK BAR

A food truck will be located near the entry/exit.

\*Looking forward to a great day of football. Please feel free to contact us if you have any questions. Go Knights and Win The Day!\*

## COVID-19 PROTOCOLS

*The Oxnard Knights Football and Cheer Organization is following guidance from local health departments and the Centers for Disease Control and Prevention (CDC) regarding large gatherings, including CDC Recommendations on preventing the spread of COVID-19. We will be providing temperature checks for ALL PERSONNEL ENTERING THE FOOTBALL FIELD (i.e. players, coaches, hydration personnel, field assistants, etc.).*

*At this time, all Gameday Events will take place as planned. However, if you, your coach, your player, or family members within the same household are sick (with COVID-19), pending results of a COVID-19 test, feeling you are getting sick, ***we ask that you please stay home***. Currently, older adults and persons with underlying health conditions are considered to be at increased risk of severe illness and complications from COVID-19. Examples of underlying health conditions include heart disease, lung disease, diabetes, people with weakened immune systems, and people who are pregnant. The CDC recommends that people in high-risk groups consult with their healthcare provider about attending any large gathering. We all know common cold, allergies, etc. exist. Our organization has a responsibility to ensure we keep our players, families, and community safe.*

*If you do choose to attend our Gameday Event, please keep in mind the CDC recommendations on how to keep yourself and others healthy:*






- *Avoid close contact with people who are sick.*
- *Avoid touching your eyes, nose, and mouth with unwashed hands.*

*Wash your hands often with soap and water for at least 20 seconds. Use an alcohol-based hand sanitizer that contains at least 60% alcohol if soap and water are not available. Please visit our website [www.oxnardknightsfootball.org](http://www.oxnardknightsfootball.org) for more information, and/or refer to our local Ventura County Recovers website <https://www.venturacountyrecovers.org/>.*





# Student Health Decision Tree

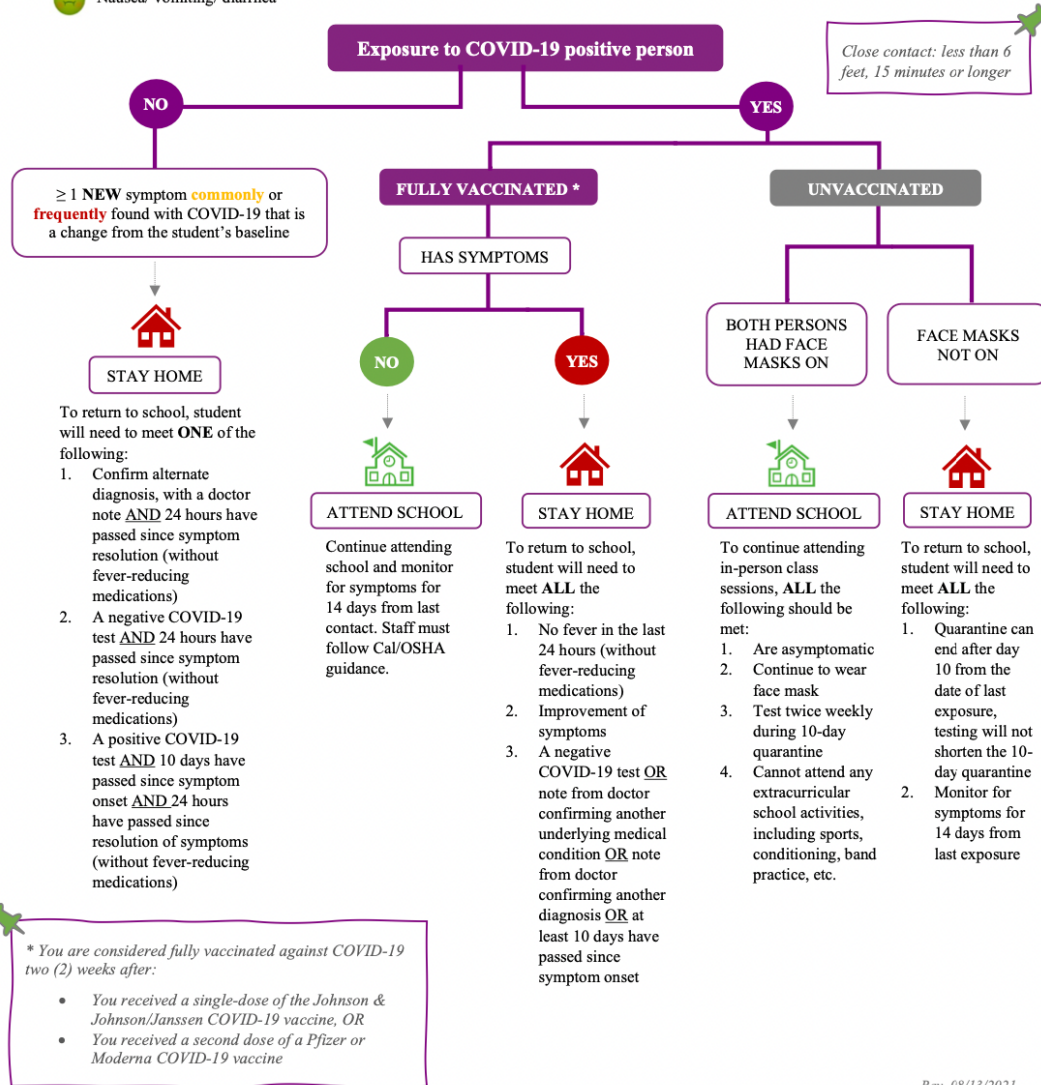
Screen all students for potential COVID-19 symptoms or exposure

Symptoms commonly found with COVID-19 or other viral infections

-  Sore throat
-  Headache
-  Congestion/ runny nose
-  Fatigue/ muscle or body aches
-  Nausea/ vomiting/ diarrhea

Symptoms frequently associated with COVID-19

-  Fever ( $\geq 99.5^{\circ}\text{F}$ )
-  Difficulty breathing
-  Cough
-  Loss of taste/ smell

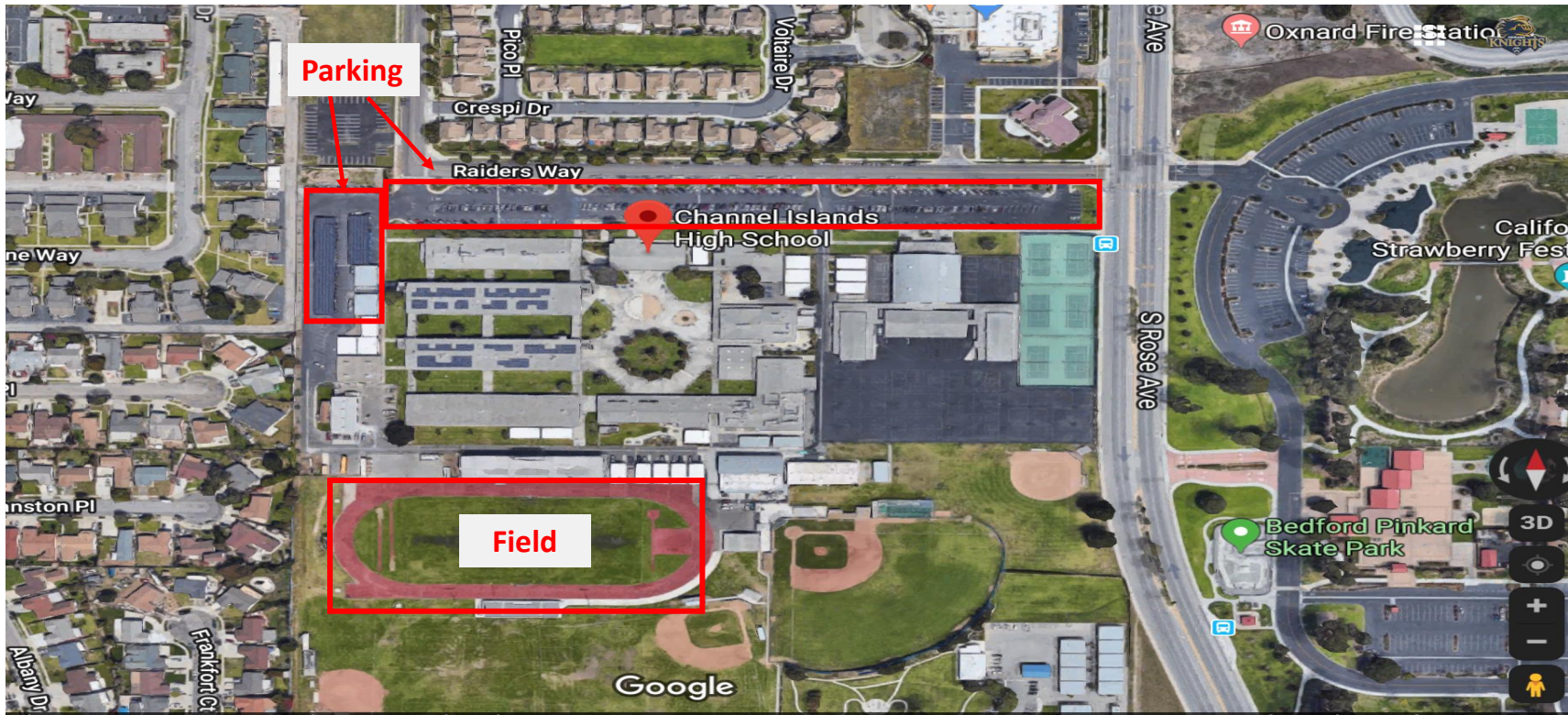


Rev. 08/13/2021

This care pathway was designed to assist school personnel and is not intended to replace the clinician's judgment or establish a protocol for all patients with a particular condition. Diagnosis and treatment should be under the close supervision of a qualified health care provider.

# CHANNEL ISLANDS HIGH SCHOOL PARKING

## Channel Islands High School

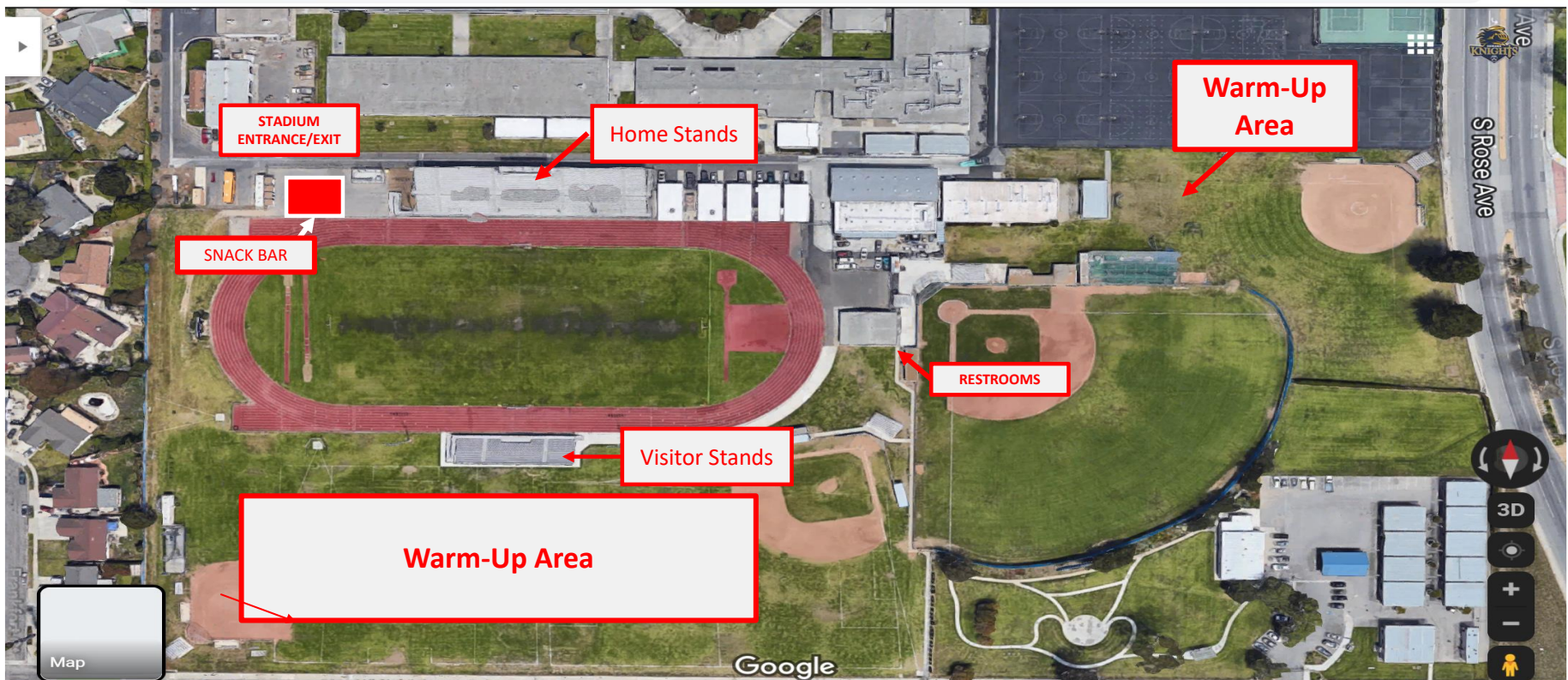


1400 Raiders Way, Oxnard, CA 93033

# CHANNEL ISLANDS HIGH SCHOOL

ENTRANCE/EXIT | HOME/VISITOR STANDS | SNACK BAR | WARM-UP AREAS

## Channel Islands High School



1400 Raiders Way, Oxnard, CA 93033

# CHANNEL ISLANDS HIGH SCHOOL

## EMERGENCY MAP

### DIRECTIONS TO HOSPITAL

Channel Islands High School  
1400 Raiders Way, Oxnard, CA 93033

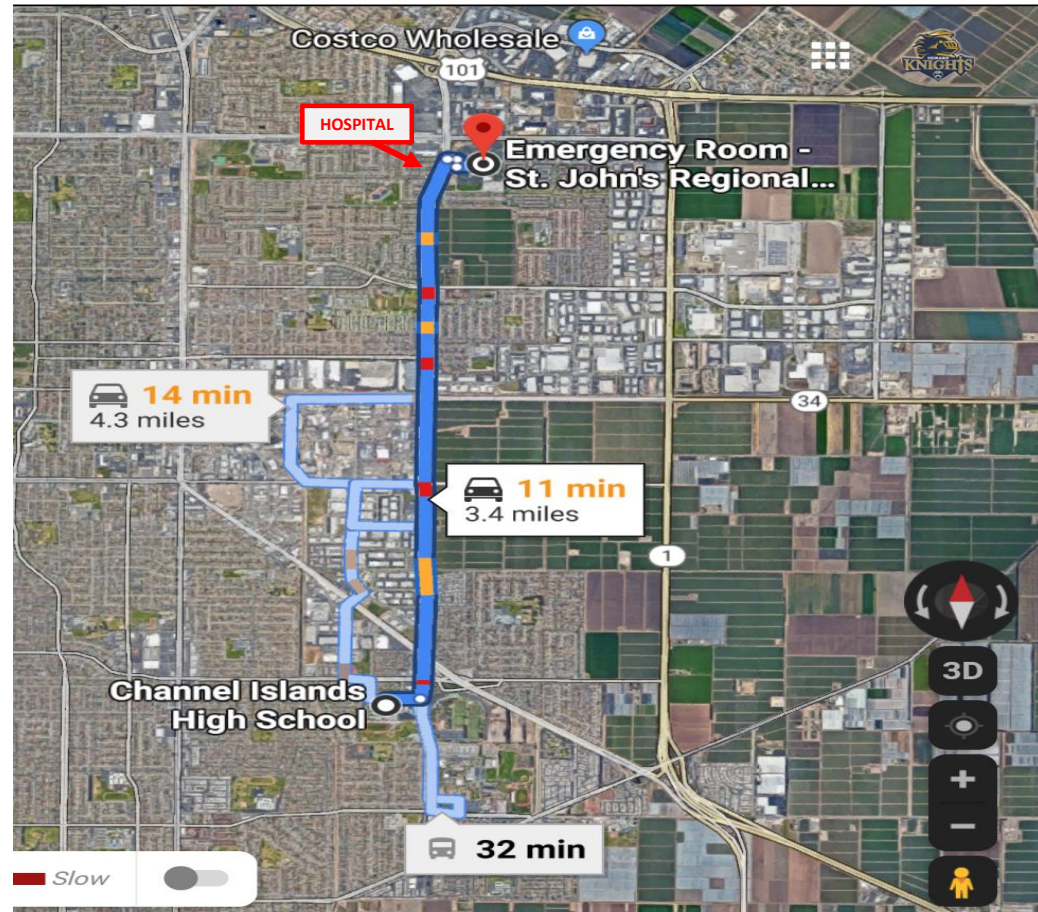
Head east on Raiders Way toward S Rose Ave  
0.1 mi

Turn left onto S Rose Ave  
Pass by Jack in the Box (on the right in 0.2 mi)  
3.2 mi

Turn right onto Mc Grath Dr W  
210 ft

Turn right at the 1st cross street  
223 ft

Turn left  
Destination will be on the right  
302 ft  
Emergency Room - St. John's Regional Medical Center  
1600 N Rose Ave, Oxnard, CA 93030

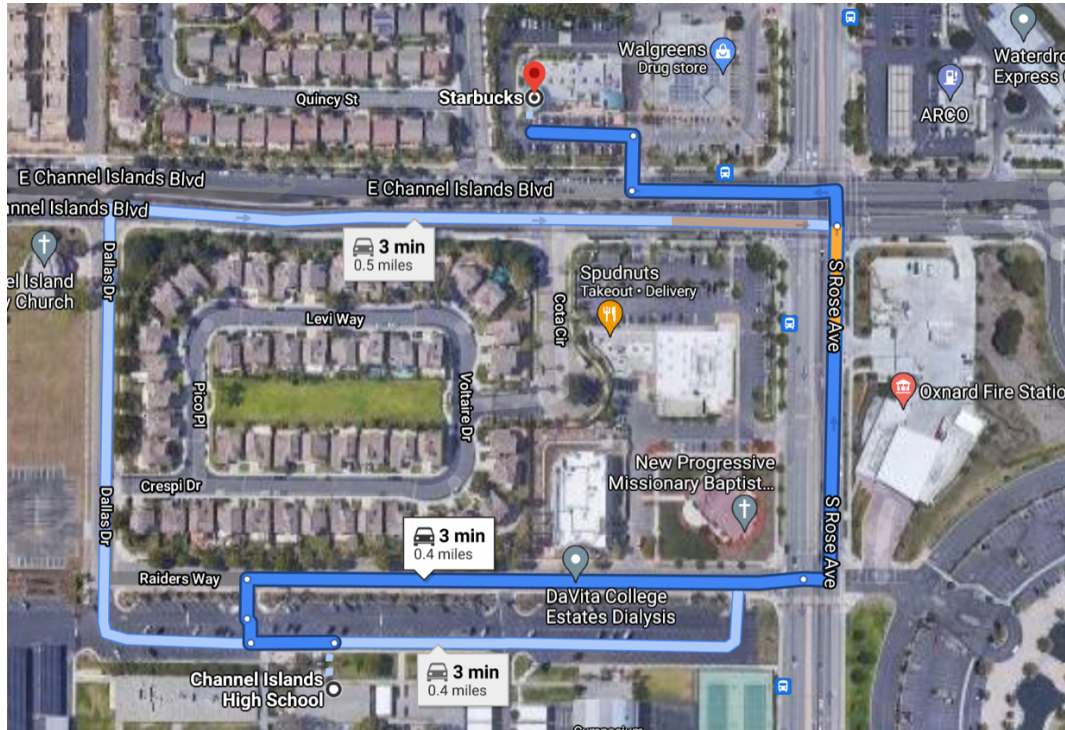


# QUICK STOPS

## STARBUCKS (3 minute drive | 8 minute walk)

1611 E. Channel Islands Blvd.

Oxnard, CA 93033



Other convenient places within the same vicinity:

-Panda Express, Walgreens, Jersey Mikes, Spudnuts